

ASX Announcement

Medibio Limited – 12 June 2018



Medibio provides updated Investor Presentation

Sydney, Australia and Minneapolis, MN USA – 12 June 2018: Medibio Limited (MEB or the Company)(ASX: MEB)(OTCQB: MDBIF), a mental health technology company, today released an updated Investor Presentation in advance of attending an investor conference and investor and corporate meetings undertaken in Asia.

The updated presentation provides further clarity on the Company's recently launched Corporate Health products and the forecast timing of upcoming product releases including Medibio's Consumer and Integrated Health product launches.

Medibio CEO and Managing Director, Jack Cosentino stated, "The cadence and quality of the products Medibio is bringing to market are second to none. We are extremely proud to be proactively addressing the largest health care crisis of our time and look forward to providing the market with updates on progress against our milestones. In addition, at the end of the quarter, the Company will provide the market an update on progression of our regulatory submissions."

Medibio will be attending an investor conference and undertaking additional one on one meetings with investors and corporations across Asia. The Company secured a strong schedule of meetings via new and existing Asian corporate partners and will continue to invest in developing these relationships and improving our exposure and presence in the Asia region.

- ENDS -

ASX Announcement

Medibio Limited – 12 June 2018



About Medibio Limited

Medibio (ASX: MEB) (OTCQB: MDBIF) is a mental health technology company that has pioneered the use of objective biometrics to assist in the screening, diagnosing, monitoring and management of depression and other mental health conditions. The company offers comprehensive mental health solutions for business through its Corporate Health programs and is developing products to serve both the consumer and regulated healthcare provider markets. The company was founded in Australia, with offices located in Melbourne (Vic), Perth (WA), and U.S. offices in Minneapolis, MN. Medibio is listed on the Australian Securities Exchange Ltd and trades on the OTCQB Venture Market. Investors can find additional information on www.otcm Markets.com and www.asx.com.au.

Further Information:

Shareholder and Investor Inquiries:

Stephanie Ottens
Investor Relations Director
Medibio Limited
stephanie.ottens@medibio.com.au
T: +61 434 405 400

Website: www.medibio.com.au

Media Inquiries:

Josh Purdy
Senior Public Relations Manager
Medibio Limited
josh.purdy@medibio.com.au
T: +1 952-222-0551 ext. 208
M: +1 612-695-0168

medibio

Investor Presentation

June 2018

© 2018 Medibio Limited



FORWARD LOOKING STATEMENTS

The purpose of the presentation is to provide an update of the business of Medibio Limited **(ASX:MEB) (OTCQB: MDBIF)**. These slides have been prepared as a presentation aid only and the information they contain may require further explanation and/or clarification.

Accordingly, these slides and the information they contain should be read in conjunction with past and future announcements made by Medibio Limited and should not be relied upon as an independent source of information. Please contact Medibio Limited and/or refer to the Company's website for further information. The views expressed in this presentation contain information derived from publicly available sources that have not been independently verified.

None of Medibio Limited, or any of its affiliates or associated companies (or any of their officers, employees, contractors or agents (the Relevant Persons)) makes any representation or warranty as to the accuracy, completeness or reliability of the information, or the likelihood of fulfillment of any forward looking statement or any outcomes expressed or implied in any forward looking statements.

Any forward looking statements in this presentation have been prepared on the basis of a number of assumptions which may prove incorrect and the current intentions, plans, expectations and beliefs about future events are subject to risks, uncertainties and other factors, many of which are outside Medibio Limited's control. Important factors that could cause actual results to differ materially from assumptions or expectations expressed or implied in this presentation include known and unknown risks.

Because actual results could differ materially to assumptions made and Medibio Limited's current intentions, plans, expectations and beliefs about the future, you are urged to view all forward looking statements contained in this presentation with caution. Except as required by applicable law or the ASX listing rules, the Relevant Persons disclaim any obligation or undertaking to publicly update any statements in this presentation, whether as a result of new information or future events.

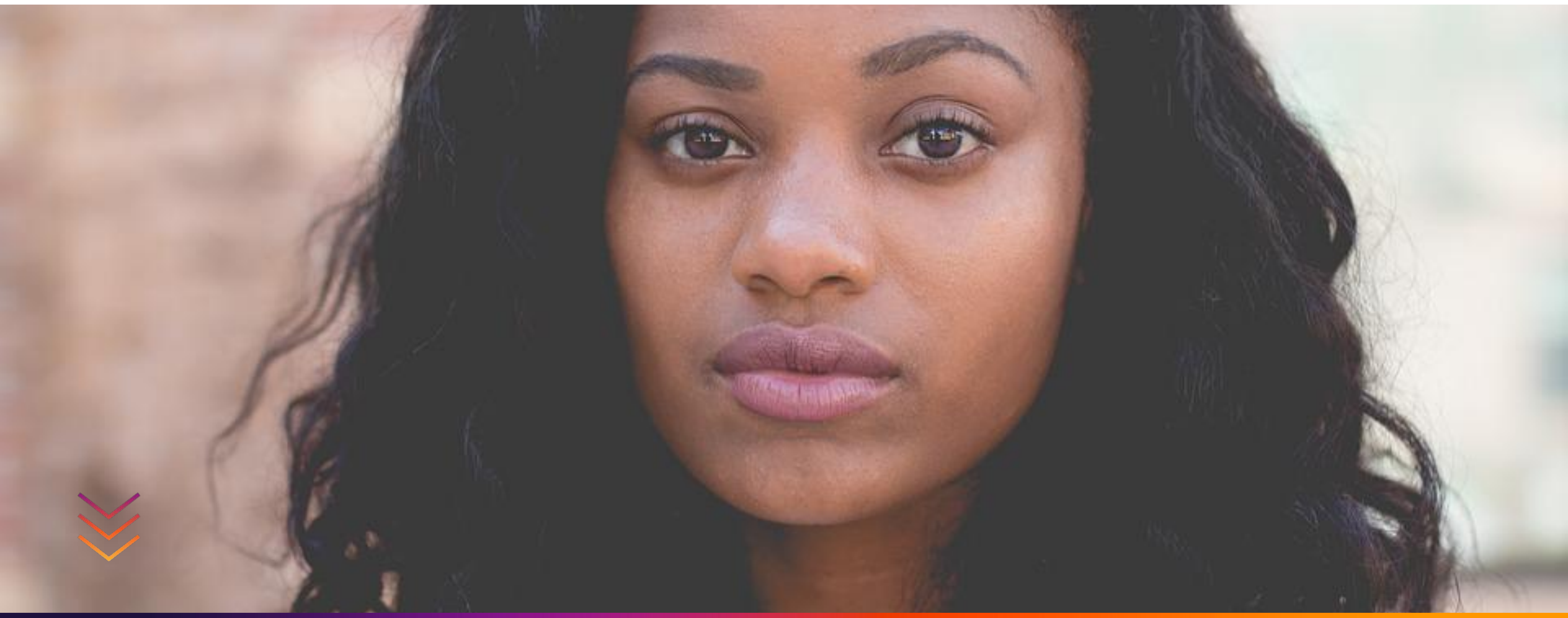
This presentation should not be relied on as a recommendation or forecast by Medibio Limited. Nothing in this presentation constitutes investment advice or should be construed as either an offer to sell or a solicitation of an offer to buy or sell shares in any jurisdiction.

The logo for medibio, featuring the word "medibio" in a lowercase, sans-serif font. The letters "me" are dark blue, "di" are purple, and "bio" are orange. The background consists of a pattern of small white dots arranged in a grid that tapers towards the center, creating a subtle circular effect.

medibio

The mental health technology and services company using objective physiologic data to assist in the screening, diagnosing, monitoring and management of depression and other mental health conditions.

The Challenge



THE CHALLENGE BY NUMBERS

In Organizations

Mental Health in the Workplace

Only **3.5%**



of employees will utilize their employee assistance program, at an approximate cost of



of employees in severe ranges will be untreated



2.9 MILLION Hours per year of lost productivity



of employees meet the diagnostic criteria for depression



return on investment through early and effective targeted interventions

In Society

Stigma and lack of access are prevalent globally

21 million suicide attempts from mental illness

Of those, nearly **1 million** are successful

In 2015, suicide was the



leading cause of death among 15 to 29 year-olds globally

300 MILLION

suffer from depression

1 in 13

suffer from anxiety

7.7 MILLION

PTSD sufferers in the United States alone

In the Health Care System

Only **1 psychiatrist per 100,000 people** in over half the countries in the world

40% of countries have less than one hospital bed reserved for mental disorders **per 10,000 people**

Out of **350 million** patients globally **< 7%** receive optimal treatment



50% are never diagnosed



30% are incorrectly diagnosed



\$94.5 BILLION

direct cost to treat Major Depressive Disorder (MDD) annually in the USA



\$12.6 BILLION

direct cost to treat depression annually in Australia

The Solution



THREE UNIQUE VERTICALS ADDRESS THE CHALLENGE

20 Million Covered Lives By 2020

Vertical 1: CORPORATE HEALTH

Personalised solutions in employee and organizational mental health.

Launched May 2018

~64 million
lives¹

Vertical 2: CONSUMER HEALTH

Empowering consumers to track and manage mental health.

Launching Q1 FY19

~266 million
lives²

Vertical 3: INTEGRATED HEALTH

Clinical decision support systems, enabling clinicians to monitor and manage their patient populations.

Launching Q2 FY19

~450 million
lives³

1. Based on employment in USA and Australia
2. Based on adult population in USA and Australia
3. Based on people in the world currently suffering from a mental health condition

MEDIBIO CORPORATE HEALTH & INSURANCE PRODUCT LINE

Medibio Inform
CORPORATE HEALTH



Entry Level

A mental health assessment + biometric snapshot into your organizations' mental health.

\$5 per capita/per person for a 4 week program

Illuminate + IlluminateExecutive
CORPORATE HEALTH



Subscription Based

End to end mental health program from proactive, high performance and executive, to telepsych support and triage.

**\$68 per capita per annum
\$1500 per executive per annum**

Incentify
INSURANCE



White Labelled

Real time monitoring & management for policyholders. Prospective and retrospective data analytics from your population.

Custom pricing

The world's most advanced combined psychological and biometric technology platform.

medibio

CORPORATE HEALTH

Providing objective analysis and mental health services to the employee, paid for by their employer.

- Confidential Major and Mini mental health checks
- Personalized strategies direct to employee's smartphone
- Daily biometric tracking
- Telepsych debriefing of results
- Proactive strategies to reduce and protect against risk
- Optional system tracking and notifications when scores escalate
- Elevated scores reviewed by qualified psychologists
- Executive Program
- Unprecedented, real time dashboard into workforce mental health and targeted strategies for change

Clients include:

JACOBS **pwC** **Wesfarmers**



CONSUMER OFFERING

TRANSFORMING MENTAL HEALTH OUTCOMES

Empowering individuals to monitor mental health and wellbeing like never before.

Insights is the mobile mental health system combining digital biomarkers from wearables and subjective monitoring, to put personalized mental health in the palm of the consumer's hand.

- Wearable driven Mental Health scoring that allows the user to baseline and manage their Mental Health journey with biometric feedback
- Interactive mood tracking and journaling that enables users to proactively manage episodes of mental illness
- Integrates with all heart rate enabled devices from Garmin, Apple & Fitbit
- Compatible with most smartphones & tablets on Android & iOS
- Upgrade to Insights Pro to get deeper biometric insights, unlimited history and storage of your mental health readings, plus data sharing capabilities via the Logics professional portal with caregivers and clinicians

▶ To be available for purchase at \$9.99 per month or \$99 per year



insights
by Medibio

INTEGRATED HEALTH



Index is a regulated medical device software for Apple and Android mobile platforms to allow the collection of high-fidelity biomarkers.

iOS and Android apps empower mental health patients and their practitioners with a concentrated, highly personalized, objective understanding of mental health, complemented by management tools to ensure better quality of life.

Featuring the Index biometric reporting, the app includes the functionality Of the Insights app plus:

- Regulated data collection device and software platform
- Integration with regulated, skin worn ECG patch medical devices
- Diagnosis aide for mental health indications
- Compliance and feedback tracking
- Monitoring of mental health indications
- Depression Episodes
- Longitudinal data integration on Medibio portal
- Mental Health Care Plans

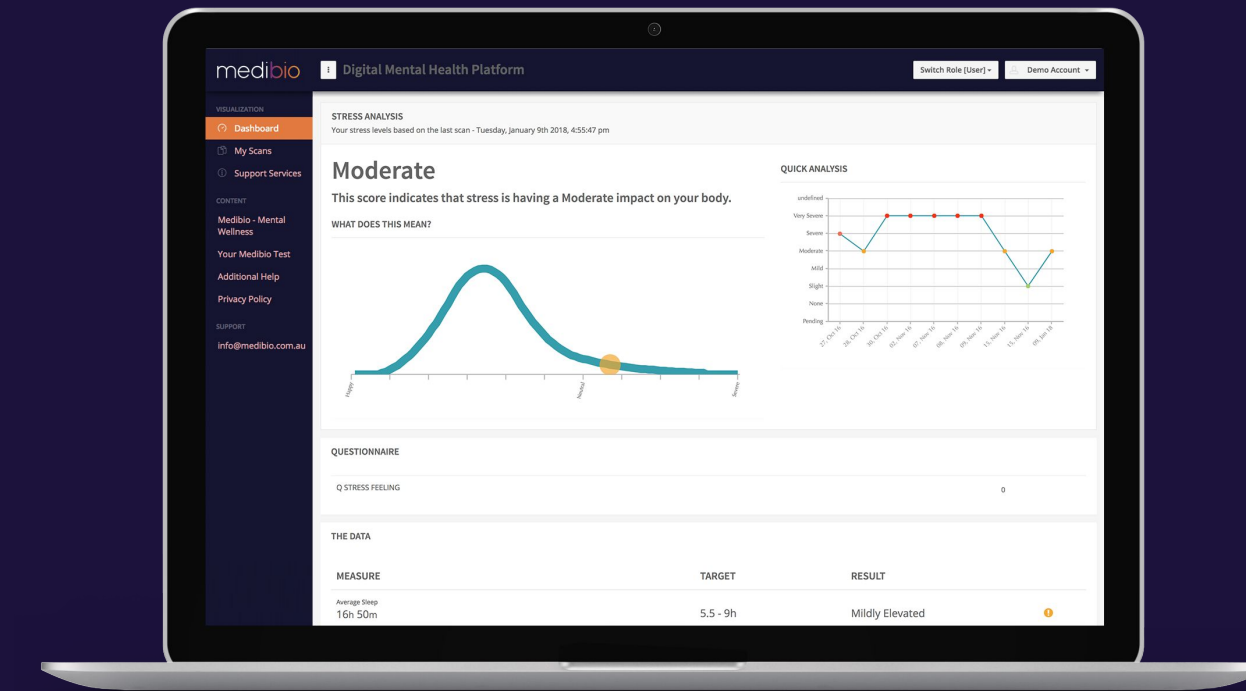


Logics Professional Portal is a cloud-based, HIPAA-compliant platform allowing providers to gather, interpret and manage near real-time mental health patient data.

The platform will provide a longitudinal view into both Insights and Index data, including information on risk stratification, early detection, monitoring and intervention, treatment response and efficacy, along with tools to program and provide proactive patient care.

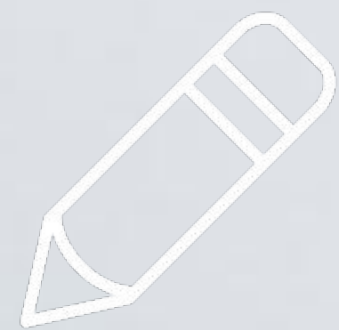
Features include:

- Longitudinal view of data points - heart rate, sleep, mood tracking, medication adherence, therapy engagement
- Engagement with Insight scoring and utilization of platform features for wellness management
- High resolution Index mental health biometric data analytics



EMERGING DIVISION

DIGITAL THERAPEUTICS



Therapy
Adherence and
Effectiveness



Future
Formulation
and Tracking



CRO
Support



Technology for
clinical trials,
academic research

Current Partnerships and Projects in Process



MAYO
CLINIC



- Ketamine Titration and Effectiveness
- Differential Diagnosis



medibio

The Science



A HISTORY OF PIONEERING RESEARCH MENTAL ILLNESS AND BIOMARKERS IN THE HUMAN BODY

Physiology

Our approach exploits features of cardiovascular physiology influenced directly by the autonomic nervous system and susceptible to disruption during sleep, as a source of biometrics that correlate with onset and existence of mental dysfunction.

20 plus years*
of data collected

Data Science

Our approach focuses on using Artificial Intelligence to monitor mental illness types (such as depression, anxiety and stress) and potential physiological metrics, so we can predict irregularity and future recurrent episodes.

A comprehensive patent suite
+ CHR, technology, and diagnostics

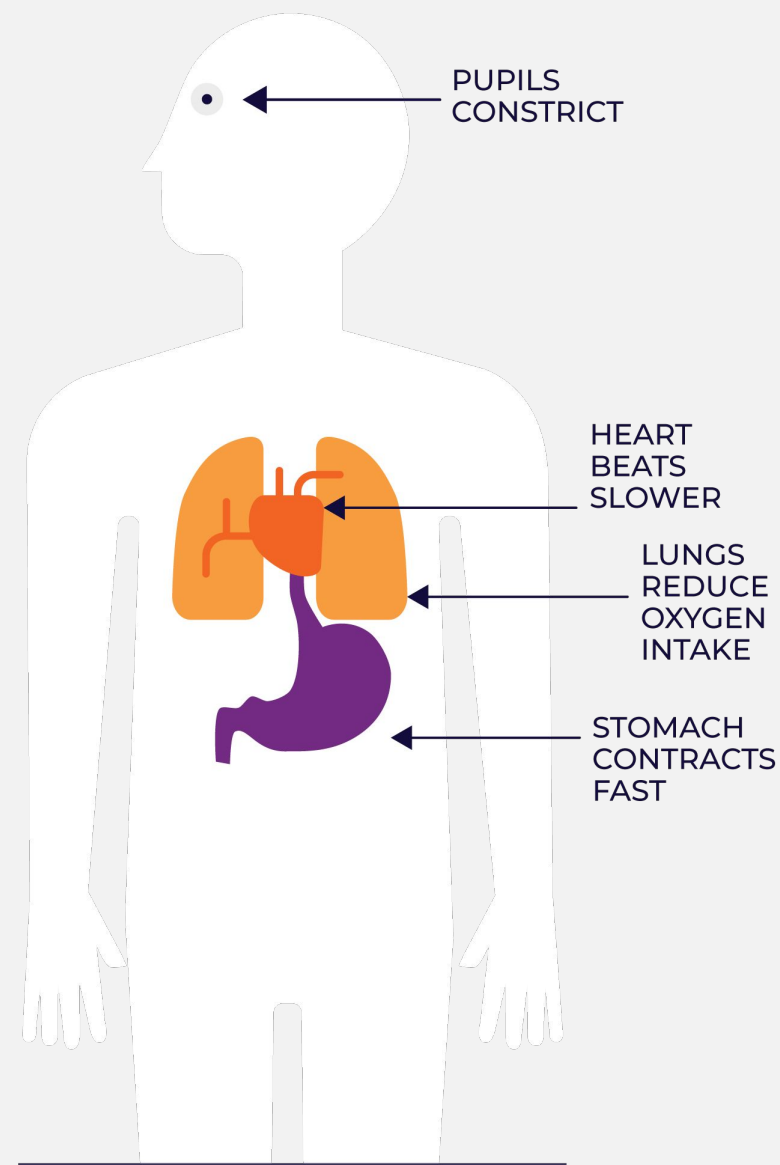
The relationship between psychiatric illness and the circadian pattern of heart rate.
Hans G. Stampfer, Australian and New Zealand Journal of Psychiatry 1998; 32:187-198.

medibio

PHYSIOLOGICAL SCIENCE

THE CIRCADIAN CARDIAC AND SLEEP RELATIONSHIP

The autonomic nervous system (ANS) is comprised of two arms:



PARASYMPATHETIC SYSTEM

PARASYMPATHETIC SYSTEM (PS)

Plays a key role in growth, **restorative processes**, anabolic activities, conservation of bodily energy and resting of vital organs

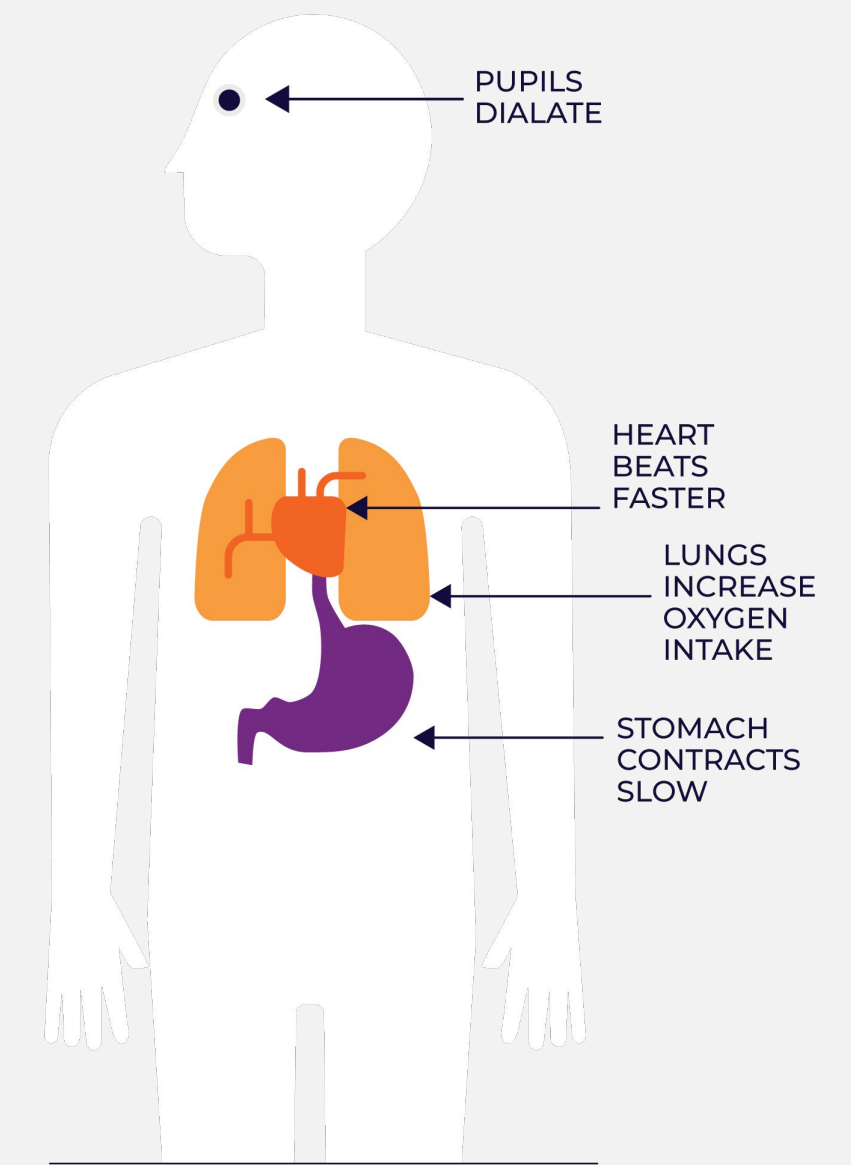
Modulation controls physiological stability

Activity is recessive (**night-time**)

SYMPATHETIC SYSTEM (SS)

Prepares us for the fight or flight situations, keeping the body in a constant state of alert

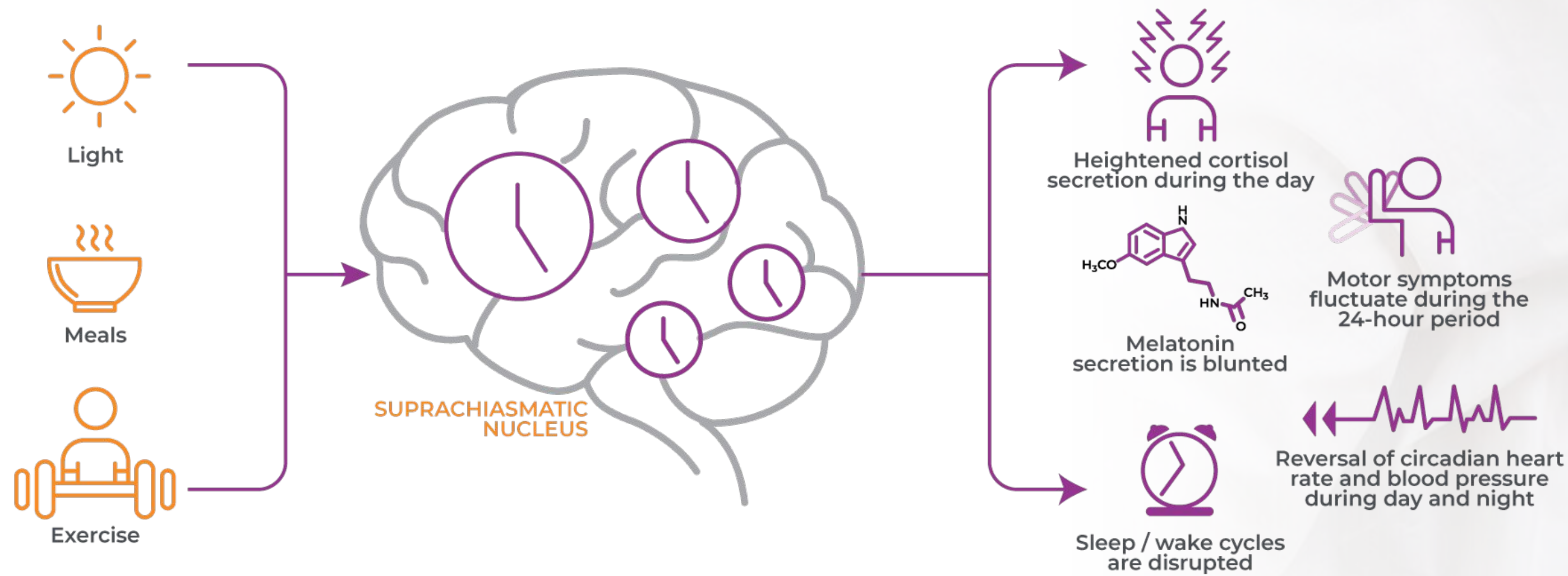
Activity is predominant (**day-time**)



SYMPATHETIC SYSTEM

The ANS is continuously seeking balance of these two major components

Altered Circadian Cardiac and Sleep ANS Function in Mental Illness



- There are physiological changes observed in both cardiovascular regulation and sleep patterns associated with mental illness.
- The normal parasympathetic modulation seems to be dominating during sleep and sympathetic activity awake-time are completely transformed.
- Pathophysiological alterations are likely to alter heart rate dynamics during sleep, thereby providing a relevant window to observe multi-systemic characteristic of depression and anxiety.

Heart Rate Variability: a reliable indicator of ANS function

HRV is a quantitative, non-invasive, highly reproducible index of cardiac autonomic function and an important indicator of the balance of sympathetic and parasympathetic tone

HRV analysis is typically based on Time and Frequency – Power Spectral domains

Reduction in HRV is altered in individuals with psychiatric disorders including depression, anxiety, bipolar I and II, schizophrenia, and substance dependence

The use of HRV as a transdiagnostic marker has become a novel tool in the psychiatry armamentarium for determination of SS activity, PS modulation and sympathovagal imbalance

High LF domain index combined with low HF index in the presence of an elevated LF-HF power ratio is indicative of parasympathetic dysfunction until proven otherwise

SCIENTIFIC ADVISORY BOARD

External Advisors:

Martin Chapman, MBBS FRANZCP

Psychiatrist and Fellow of the **Royal Australian and New Zealand College of Psychiatrists**. As a medical administrator he has worked in both hospital and community settings in private and government sectors. His clinical practice is in the area of treatment resistant mood and anxiety disorders. He has taught in undergraduate and postgraduate Psychiatry with a focus in assisting primary care physicians in their management of mental health conditions. He has an interest in mental health system development and the role of new technologies in streamlining and providing clinical decision support.

Joel R. Ehrenkranz, M.D.

Endocrinologist on the faculty of the **University of Colorado School of Medicine** and a biotech entrepreneur in Salt Lake City, Utah. Dr. Ehrenkranz received his M.D. degree from Stanford and trained in internal medicine at Columbia University, neurology at Memorial Sloan Kettering Cancer Center, and endocrinology at the National Institutes of Health.

Mark A. Frye, M.D.

Chair of the Department of Psychiatry and Psychology at **Mayo Clinic**. He also serves as director of the Mayo Clinic Depression Center. Dr. Frye received his M.D. from the University of Minnesota and completed his psychiatric training at the Semel Institute for Neuroscience and Human Behavior at the David Geffen School of Medicine at UCLA. He subsequently completed a fellowship at the National Institute of Mental Health in Bethesda, Maryland with a research focus on the neurobiology of treatment resistant depression and bipolar disorder.

Lawrence Hunter, Ph.D.

Professor at the **University of Colorado** and directs the Computational Bioscience Program. He earned his degrees from Yale University, including B.A. in Psychology (cum laude); M.S. and M. Phil. and Ph.D. in Computer Science.

Wallace Mendelson, M.D.

Psychiatrist and author, and was formerly **Professor of Psychiatry and Clinical Pharmacology**, and director of the **Sleep Research Laboratory**, at the **University of Chicago**. Dr. Mendelson earned an MD degree from Washington University School of Medicine in St. Louis and completed a residency in psychiatry there as well. He has held professorships at Ohio State University and the State University of New York at Stony Brook, was Chief of the Section on Sleep Studies at the National Institute of Mental Health in Bethesda, MD, and Director of the Sleep Disorders Center at the Cleveland Clinic.

Marie Casey Olseth, M.D.

Currently in private practice as a Board Certified Adult Psychiatrist in the group practice that she owns. She earned her of Medicine degree from the University of Minnesota Medical School and completed her residency in General Psychiatry at the University of Minnesota and University of Wisconsin, Madison.

Giampaolo Perna, M.D., Ph.D.

Currently Chair of the Department of Clinical Neurosciences at **San Benedetto Menni Hospital of the Hermanas Hospitalarias (Como Lake)** and Academic Coordinator of Mental Health and Adjunct Professor at **Humanitas University (Milan)**, in Italy. He earned his degree in Medicine and Surgery at the State University of Milan, followed by Ph.D. and completed a residency in Psychiatry there as well. He is the Chair of WPA section on personalized psychiatry and Co-editor in chief of the Elsevier Journal "Personalized Medicine in Psychiatry".

Internal Advisors:

Archie Defillo, M.D.

Currently the Chief Medical Officer at **Medibio Limited**. He has over 25 years of clinical experience with neurological diseases. For the past 13 years his efforts have been focused in neurological research. His research interests include cerebrovascular, stroke, neuro-trauma, brain oxygenation, metabolism and autonomic dysfunction.

Peta Slocombe, M.S.

Registered Psychologist, member of the Australian Psychological Society and a registered National Health Practitioner with over 20 years' experience. She is currently Senior Vice President, Corporate Health with **Medibio Limited**.

Franklyn Prendergast, M.D., Ph.D.

Currently a director on the **Medibio Limited** board and chair of the Scientific Advisory Board. Previously, he was the Emeritus Edmond and Marion Guggenheim Professor of Biochemistry and Molecular Biology and Emeritus Professor of Molecular Pharmacology and Experimental Therapeutics, Mayo Medical School, to its Physician Advisory Board.

Dr. Prendergast earned his medical degree with honors from the University of West Indies. He attended Oxford University as a Rhodes Scholar, where he earned his masters degree in Physiology. After completing residency in Internal medicine at The Mayo Clinic in Rochester, Minnesota he earned a doctorate degree Biochemistry from the University of Minnesota/Mayo Graduate School.

Positions held: Chair, Department of Biochemistry and Molecular Biology; Director for Research Mayo Clinic (Rochester) (1989-1992). Board of Governors Mayo Clinic in Rochester; Mayo Clinic Board of Trustees (1992-2009); Mayo Clinic Board of Governors (1999-2006). Mayo Distinguished Investigator; Emeritus Director, Mayo Clinic Comprehensive Cancer Center and Mayo Center for Individualized Medicine.

In addition to his current role as a director on the Medibio board and chair of the Scientific Advisory Board, Dr. Prendergast holds numerous appointments with Industry and Extramural academic affiliations. He has extensive interactions over many years with National Institutes of Health (NIH): Board of Advisors for the Division of Research Grants; National Advisory General Medical Sciences Council; Board of Scientific Advisors of the National Cancer Institute; and the National Cancer Advisory Board.

MAJOR STUDIES

PAST / PRESENT STUDIES

DEPRESSION

Retrospective Study, 889 patients
November 2016

DEPRESSION

Retrospective Study, 26 patients
December 2016

DEPRESSION, ANXIETY DISORDER, SCHIZOPHRENIA

Various studies

SLEEP STAGING USING ECG DATA

7500 patients
June 2016

DEPRESSION

220 patients
Diagnostic aid supporting
De Novo FDA submission
Complete Q4 '18

PTSD

48 patients
May 2017

Versus 33-50% – Diagnostic accuracy in the Primary Care Setting¹

(1) Depression in Primary Care Vol 1: U.S. Department of Health

PARTNERS



PEER REVIEWED



MULTIPLE SITES



PLANNED STUDIES

OPIOIDS

FDA extended a formal invitation for
breakthrough technology

PTSD

Monitoring with multi-day patch and wearable
usage to support 510K
Initiate Q2 '19

PANIC ATTACK

Comparison study between anxiety and panic
disorder to identify differences in chronobiology
with Humanitas University Milan
Initiate Q1 '19

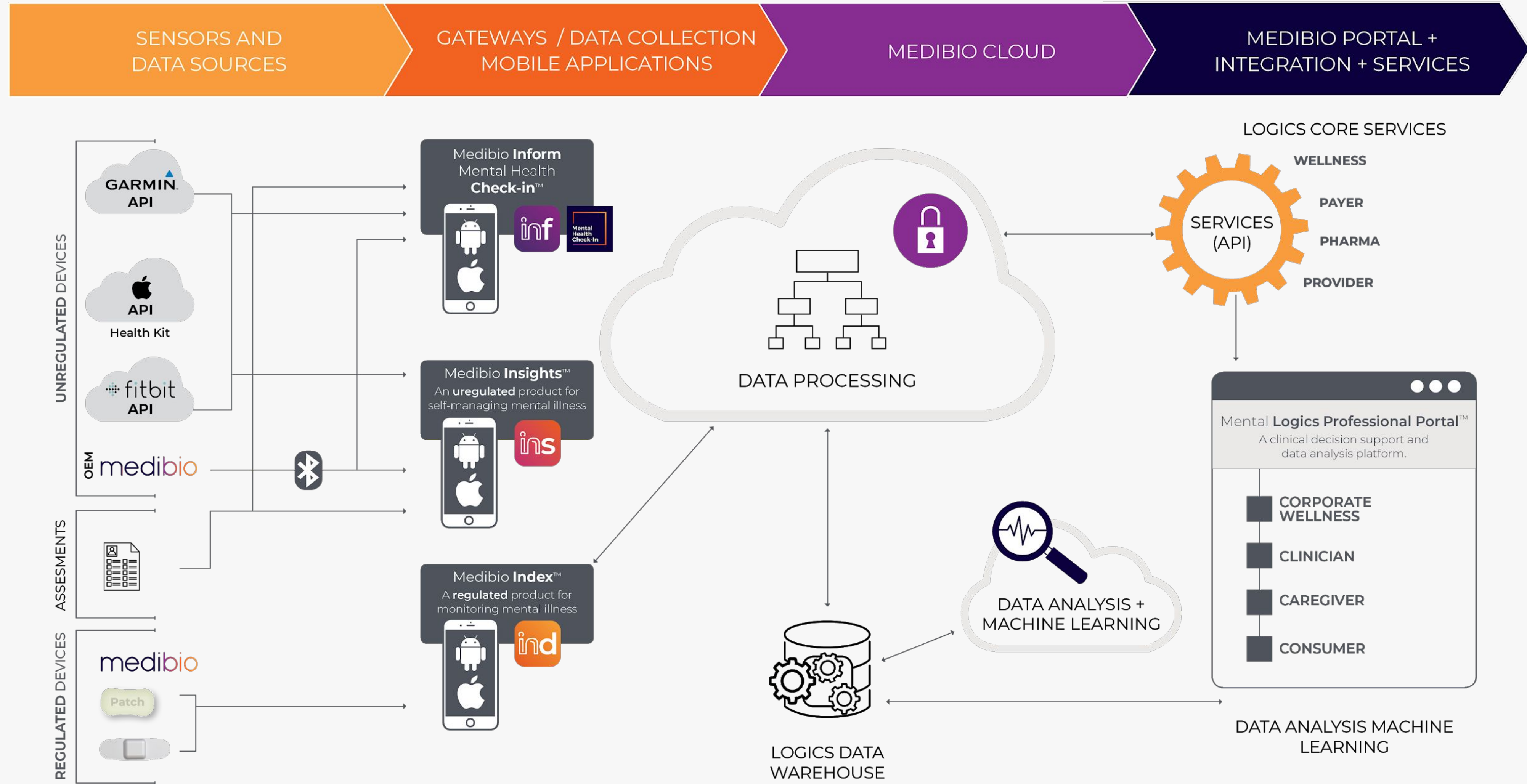
UNIPOLAR & BIPOLAR DEPRESSION TREATMENT

Response monitoring to look at differences
in cohorts and changes during treatment.
Currently enrolling patients with Mayo Clinic.
Initiated Q1 '18
Ongoing

PARTNERS



MEDIBIO TECHNOLOGY ARCHITECTURE



The Company



MEDIBIO BY THE NUMBERS

OUR GLOBAL PRESENCE



32
patents
and provisional
patents in our
portfolio

53
employees

25,000+ current covered lives

54%

of total
budget
invested
in R&D

23

Years of
Patient Data
Collected

200+
years of combined professional
psychological experience



2
certifications

CORPORATE STRUCTURE

CAPITAL STRUCTURE (ASX:MEB) (OTCQB: MDBIF)

Market Cap	AU\$35M
Share Price <i>as of 30 May 2018</i>	AU\$0.17
Shares on Issue	203M
Cash Available¹	AU\$13.5M

1. Cash balance of \$11.6M at March 31, 2018 plus anticipated inflows from option purchases, partly paid share, and grants
2. Percentage of shares on issue
3. Percentages based on available information, including share registry, options listing, ASX filings, and other reported data
4. Includes shares on issue and options

Significant Institutional Investors

- **FIDELITY 9.1%**
- **REGAL FUNDS MANAGEMENT 7.0%**
- **IFM INVESTORS 4.9%**

Shareholder Mix³

- **PRIVATE HOLDERS 46%**
- **INSTITUTIONAL HOLDERS 43%**
- **BOARD AND MANAGEMENT 11%⁴**

BOARD OF DIRECTORS



CHRIS INDERMAUR
Chairman



JACK COSENTINO
CEO/Managing Director



PETER CARLISLE
Managing Director, Olympics &
Action Sports, Octagon Worldwide



PATRICK KENNEDY
Former US Congressman
Founder, Kennedy Forum
Non Executive Director



DR FRANKLYN G PRENDERGAST
Former member board of Trustee
and Board of Governors
Mayo Clinic and Medibio
Non Executive Board Member



MICHAEL PHELPS
Non Executive Director



ANDREW MAXWELL
Non Executive Director



BRIAN MOWER
Chief Financial Officer

EXECUTIVE TEAM



JACK COSENTINO
CEO & Managing Director



BRIAN MOWER
Chief Financial Officer



ARCHIE DEFILLO
Chief Medical Officer



PETA SLOCOMBE
SVP, Corporate Health



JEREMY SCHROETTER
Chief Technology Officer



SONJA GRUNLAND
VP, Human Resources



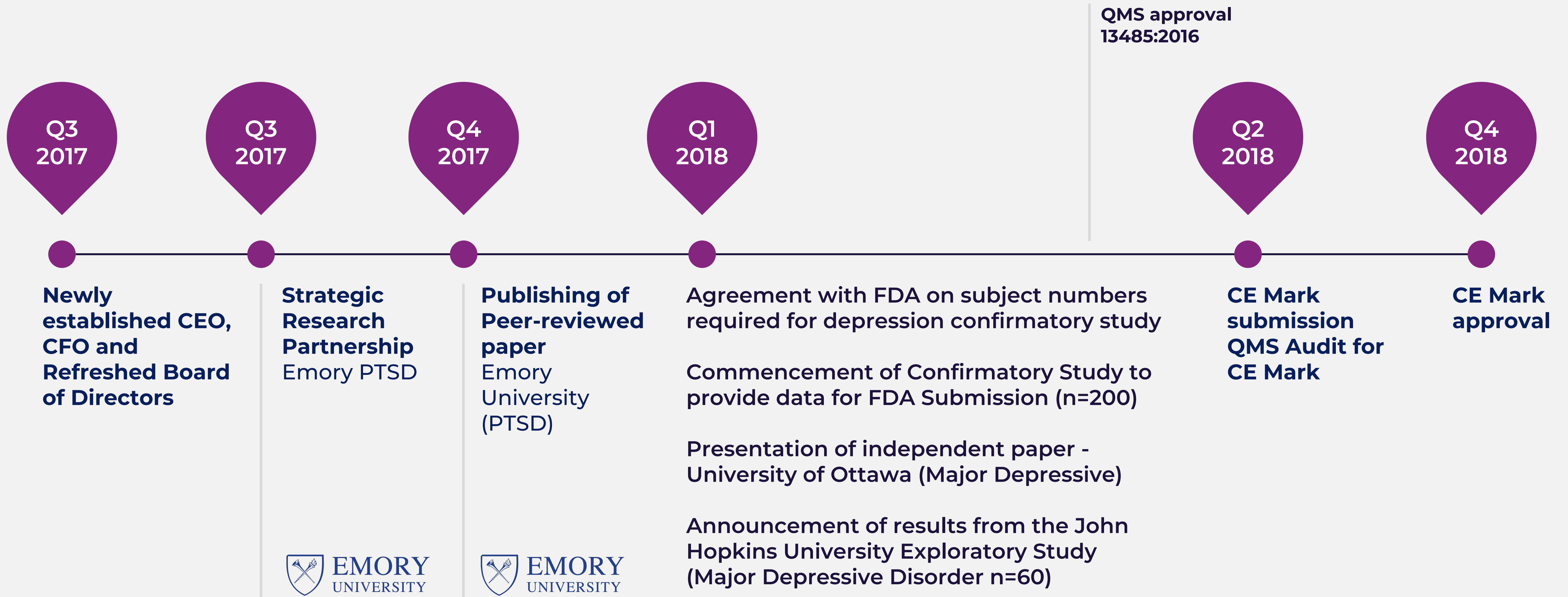
PATRICK MIDDEN
Chief Privacy Officer



TONY JOHNSON
Director, Quality & Regulatory

RECENT MILESTONES

TIMING NOTED IS FY



FUTURE MILESTONES

TIMING NOTED IS FY



21 million suicide attempts from mental illness. Of those, nearly 1 million are successful

The Solution

End to end solutions for mental healthcare

The Science

20+ years of scientific rigor

The Company

Well structured and ready to capture the total addressable market

The Opportunity

Corporate Health

Estimated Addressable Market: **64 million** employees (US and Australia)

Consumer Market

Estimated Addressable Market: **85 million+**

*based on ¼ of adult population in US and Australia

Integrated Health

Market Size: **66 million** US mental health visits per year

APPENDIX

SECURITY AND PRIVACY

Cybersecurity Statement

At Medibio we take data privacy and protection very seriously and we know that you take data protection just as seriously.

That is why we have implemented a multi-tier security program to protect the personal data of our users.

We have technical, administrative, and physical security measures surrounding our data stores and data processing facilities to protect the confidentiality, integrity, and availability of our user data. We also have security measures and additional precautions designed to protect the integrity and viability of our user-facing products, that extends security beyond the perimeter of our own networks, and into the hands of our users.

- Patrick Midden, Chief Privacy Officer

OVERVIEW OF COMPLEMENTARY/COMPETING TECHNOLOGIES

	DESCRIPTION	FDA	DIAGNOSTIC ACCURACY	EQUIP COST	TEST COST
Medibio	<i>Autonomic Nervous Dysfunction, circadian and sleep biomarker-based test and platform</i>	In Process	80-90% - based on in excess of 4000 data points	\$30	<\$100
Blood Test	Ridge Diagnostics offer an MDD score of 1 to 10 based on the analysis of 9 blood markers	No	80-90% - based on a pilot study with 79 participants	n/a	\$800
EEG	Johns Hopkins research using full EEG's to discriminate between depressed and non-depressed	No	80% based on a pilot study with 30 participants	\$30,000	\$600
EVG	ElectroVestibuloGraphy measurement of the inner ear taken in a specialty designed tilt chair	No	77-87% - based on a pilot study with 74 participants	\$10,000	>\$300
Saliva and Hormone Tests	Cortisol and hormone tests mainly aimed at stress	No	For stress only	n/a	\$100-300
Clinical Psychiatric Diagnosis	1-3 hour consult done by a trained clinician (psychiatrist/psychologist) using a structured instrument	Yes	70% concordance on the common disorders such as depression and anxiety	12 years of study	\$300-500

THANK YOU

Jack Cosentino

CEO and Managing Director

Jack.Cosentino@Medibio.com.au

8696 Eagle Creek Circle, Savage, MN 55378 USA